

MF75B4IE4

Squirrel cage asynchronous motor

Type of motor IEC 280S-4 IE4

4 poles - frame 280S - 75kW - 400/690V - 50Hz - Cast Iron - IE4

GU

ELECTRICAL DATA		
Rated motor voltage	V	400/690
Rated frequency	Hz	50
Rated motor power	kW	75
Rated motor speed	rpm	1490
Rated motor current	A	130/75
Starting/Rated current (Is/In)		8.5
Rated torque	Nm	481
Starting/Rated torque (Ts/Tn)		2.0
Breakdown/Rated torque (Tmax/Tn)		2.3
Efficiency at 100%	%	96
Power factor at 100%		0.87

MECHANICAL DATA		
Balancing		Half Key
Bearing DE		6317 C3
Bearing NDE		6317 C3
Lubricant type		Total Multis Complex S2A

GENERAL DATA		
Frame size	mm	280
Type of mounting		B3
Weight	kg	612
Degree of protection		IP55
Method of cooling		IC411
Material of housing		Cast Iron
Terminal box		See drawings / TOP
Insulation class - Temperature class		F/B 80K DOL F/F 105K in VSD S9 (35 - 50Hz)
Duty type		S1
Paint Ral n°		5003
Direction of rotation		Clockwise/Counterclockwise
Noise @ 1m	dB (A)	80
Inertia rotor	kgm ²	2.1623
Vibration class		Class B
Shaft diameter	mm	75

SITE CONDITIONS		
Ambient temperature	°C	-20 - +40°C
Altitude above sea level	m	0-1000m

SITE CONDITIONS		
3 x PTC 150°C Windings		included

STANDARDS		
Specification: IEC 60034-1	Vibration: IEC 60034-14	
Tests: IEC 60034-2	Tolerance: IEC 60034-1	
Noise: IEC 60034-9		

The rating plate values can be different from the calculated values: Data subject to changes.

Focquet 2022

This document is exclusive property of FOCQUET SA. Reprinting is not allowed without written authorization.

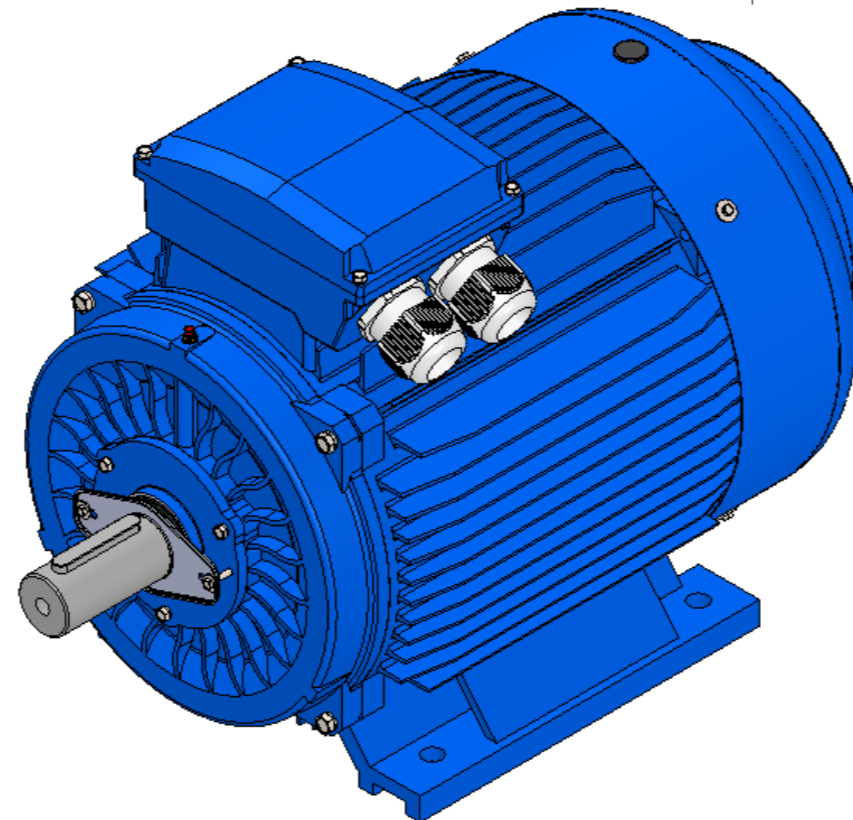
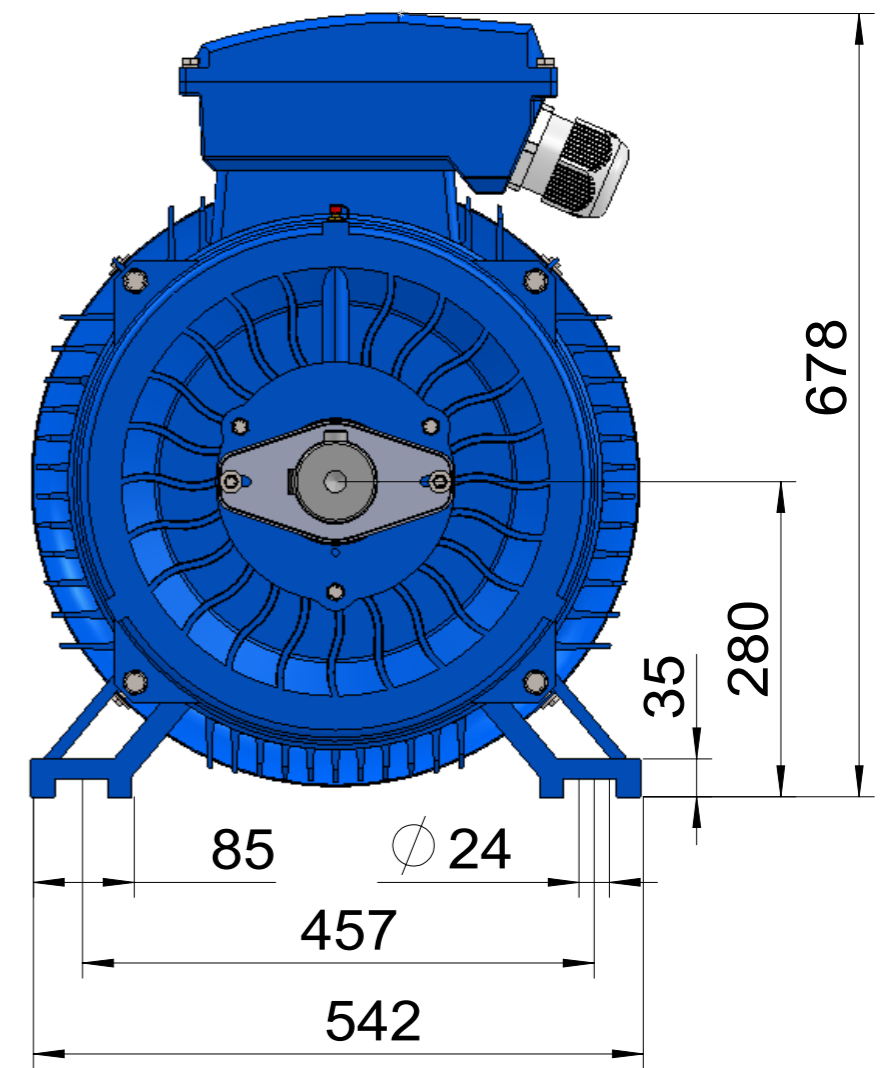
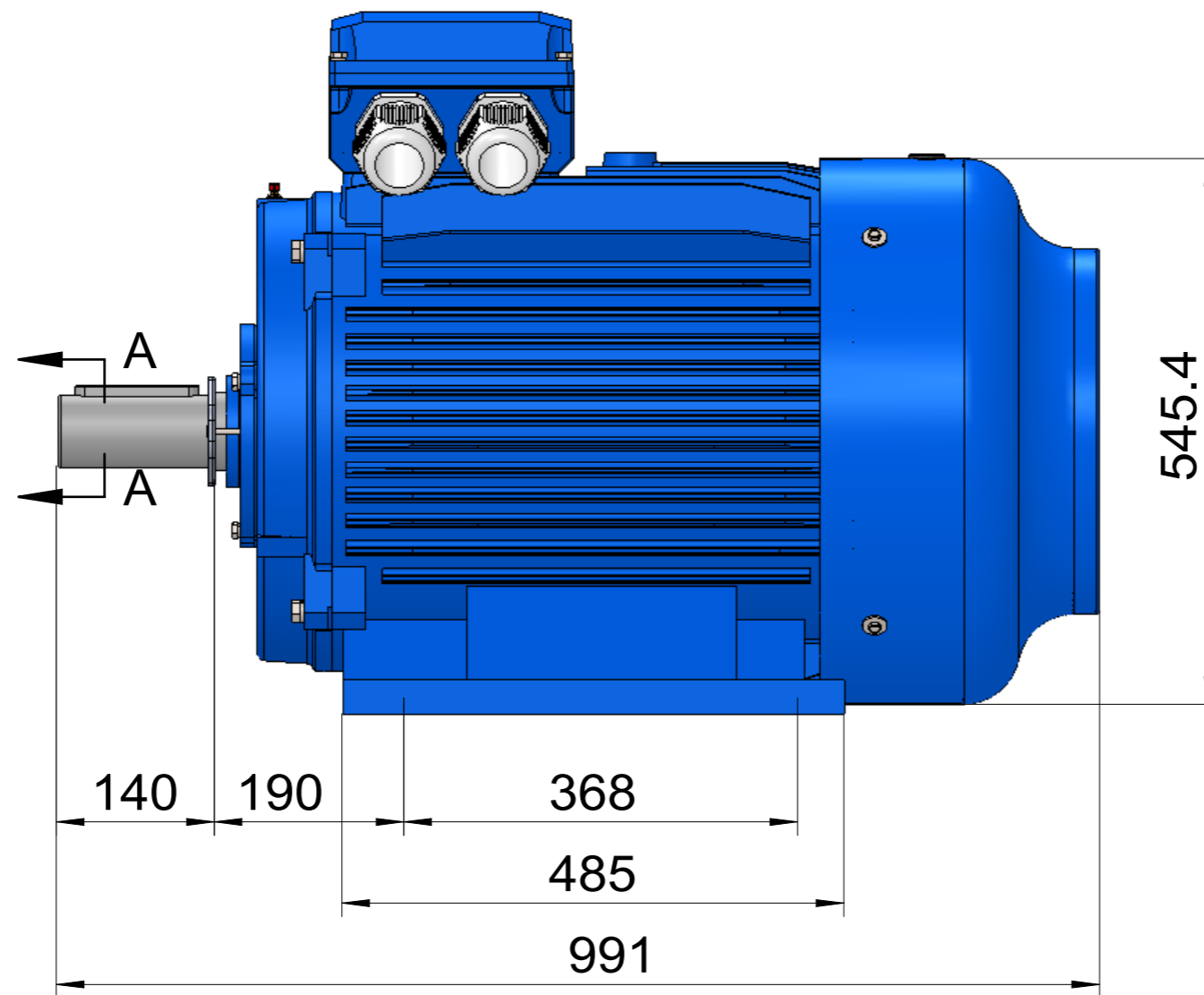
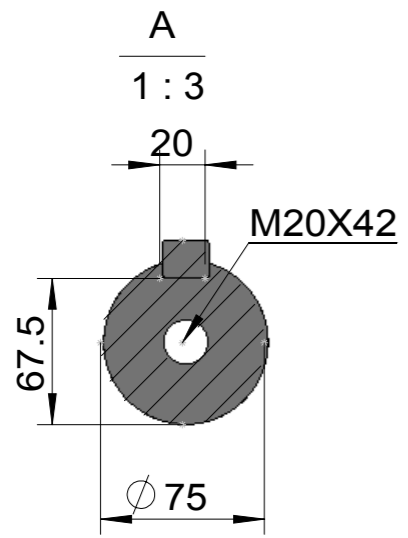
Focquet
DEPUIS 1892 - SINDS 1892



ISO 9001 :2015
N° : 44.100.150657

Rue des Haiques 1
5030 Gembloux - Belgium
TEL +32 (0) 81 62 59 70

info@focquet.be
www.focquet.be



IE4-280S-B3 4 6
 Mounting diagram